

# Graves Into Gardens

(based on the recording by Elevation Worship | original key: B)

Words and Music by  
Brandon Lake, Chris Brown,  
Steven Furtick and Tiffany Hammer

## VERSE 1

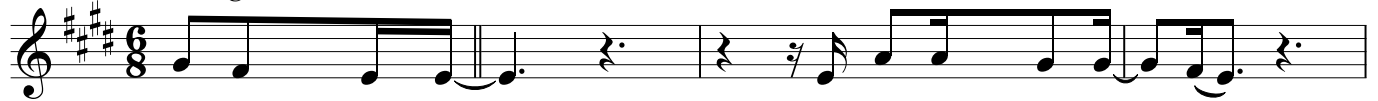
♩ = 46

A  
Swing-sixteenths

E

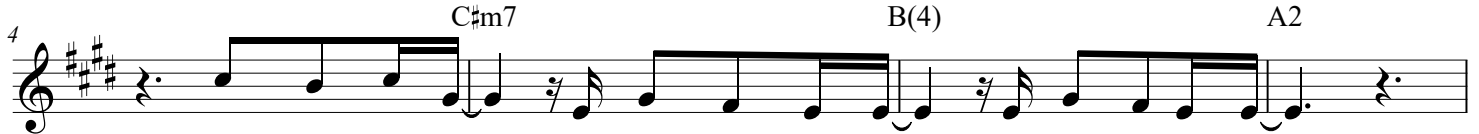
A

E



1. I searched the world,

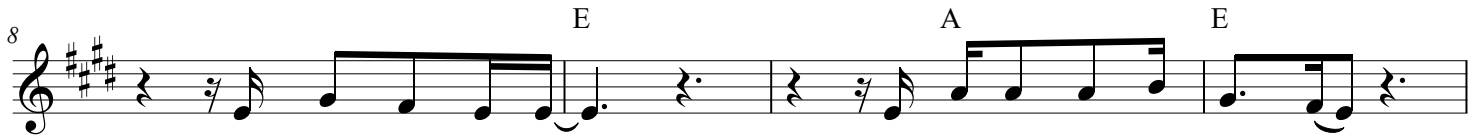
but it could - n't fill me.



Man's emp - ty praise

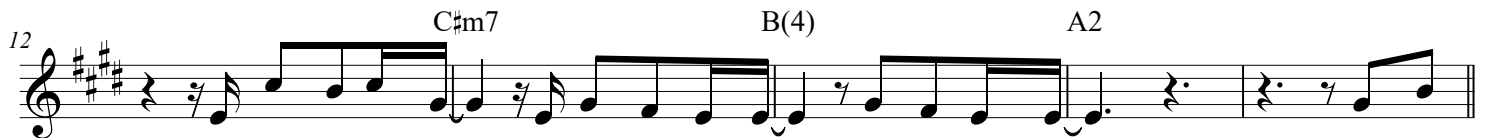
and trea - sures that fade

are nev - er e - nough.



Then You came a - long

and put me back to - geth - er.



And ev - 'ry de - sire

is now sat - is - fied

here in Your love.

Oh, there's

## CHORUS

E

C#m7



noth - ing

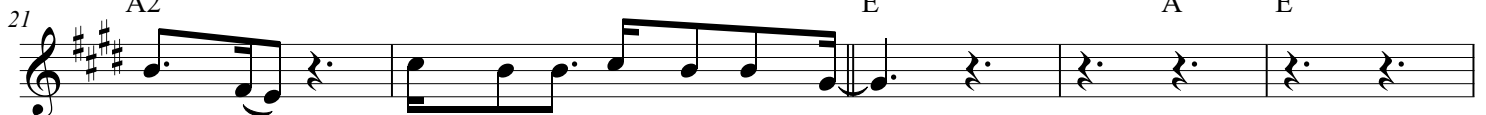
bet - ter than You.

There's noth - ing

bet - ter than You.

Lord, there's

## TURNAROUND



noth - ing,

noth - ing is bet - ter than You.

CCLI Song # 7138219

© 2019 Brandon Lake Music | Maverick City Publishing Worldwide | Music by Elevation Worship Publishing | Bethel Music Publishing

For use solely with the SongSelect® Terms of Use. All rights reserved. www.ccli.com

CCLI License # 161168

**VERSE 2**

26 A E A E

2. I'm not a - fraid to show You my weak - ness. My fail - ures and flaws,

31 C#m7 B(4) A2

Lord You've seen them all, and You still call me friend. 'Cause the God of the moun

35 E F#m7 E C#m7

tain is the God of the val - ley. There's not a place Your mer - cy and grace

**CHORUS**

40 B(4) A2 E

won't find me a - gain. Oh, there's noth - ing bet - ter than You. There's

45 C#m7 A2 1, 3

noth - ing bet - ter than You. Lord, there's noth - ing, noth - ing is bet - ter than You.

**TURNAROUND**

(1, 3) | 2, 4

49 E E A A E A

Oh, there's noth - ing is bet - ter than You. (2nd x jump to Br.)

**BRIDGE**

54 E A E A E

(1, You turn mourn - ing to danc - ing. You give beau - ty for ash  
(3 You turn graves in - to gar - dens. You turn bones in - to ar-

1, 2, 4

59

A E C#m7 A2 E

es. You turn shame in - to glo - ry. You're the on - ly one who can.  
 mies. You turn seas in - to high - ways. You're the on - ly one who can. \_\_\_\_\_

TAG

64

3, 5 1 2  
 E C#m7 A2 E D.S. E A E A

You're the on - ly one who can. Oh, there's

70

E